



SGH – Soil Gas Hydrocarbons

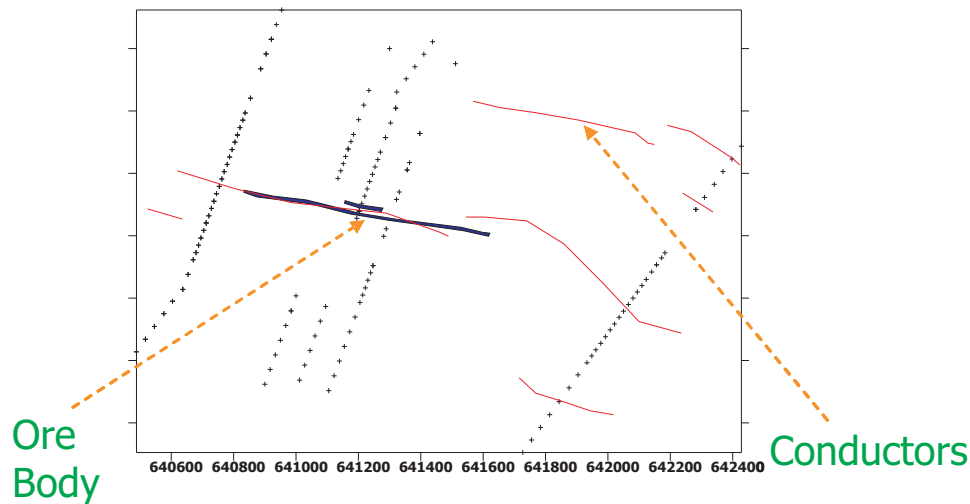
VMS - Hanson Lake (CAMECO)

Location:	Hanson Lake, Northern Saskatchewan
Climate:	Subarctic with scattered permafrost
Mineralization:	Cu and Zn in limestone
Deposit:	Cu zone - 5.87 Mt @ 2.25% Cu Zn zone - 7.2 Mt @ 7.1% Zn
Cover:	Glaciofluvial sands in B-horizon soils Flat area, swamp, black spruce 15 m depth to ore Poor drainage
Survey Design:	180 samples ~ 30 m over mineralization ~ 50 m into background

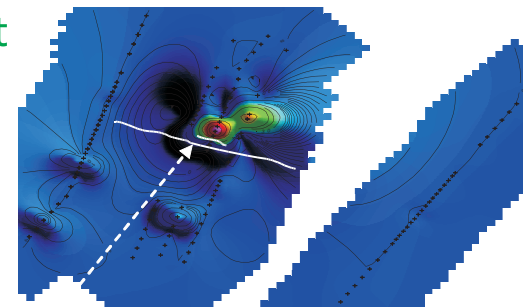


VMS - Hanson Lake (CAMECO)

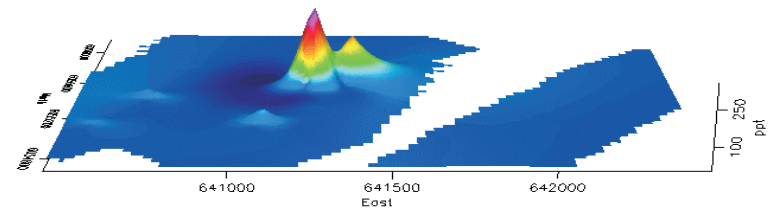
An anomaly formed by three samples closest to the ore lense which was associated with a conductor. SGH data was not anomalous over barren conductors. These observations at CAMECO's study sites indicated that SGH could be used to discriminate barren from ore-bearing conductors.



Raw Data Plot



Ore Body



CAMECO, Hanson Lake