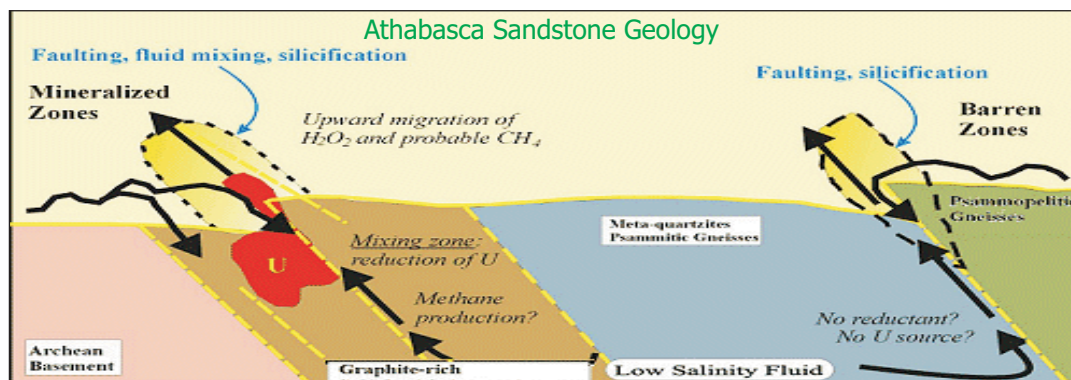
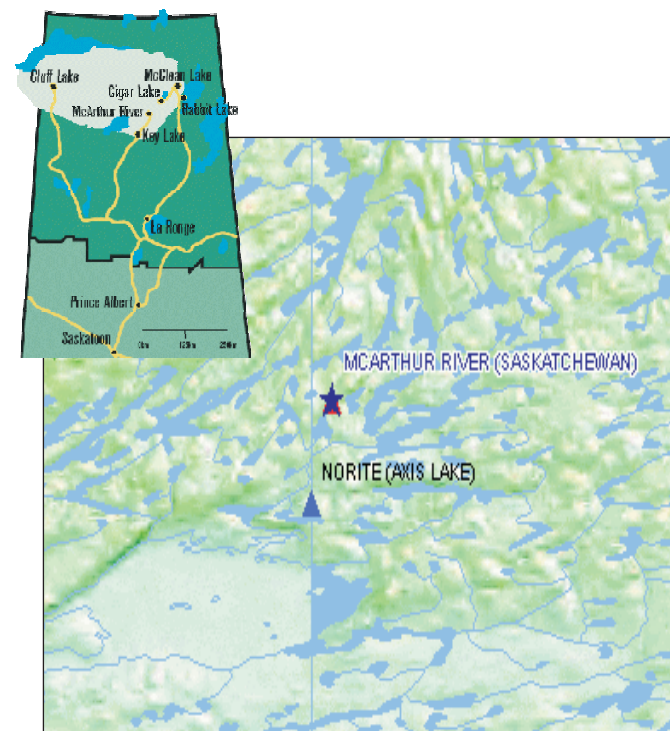




# SGH – Soil Gas Hydrocarbons

## Uranium - McArthur River (CAMECO)

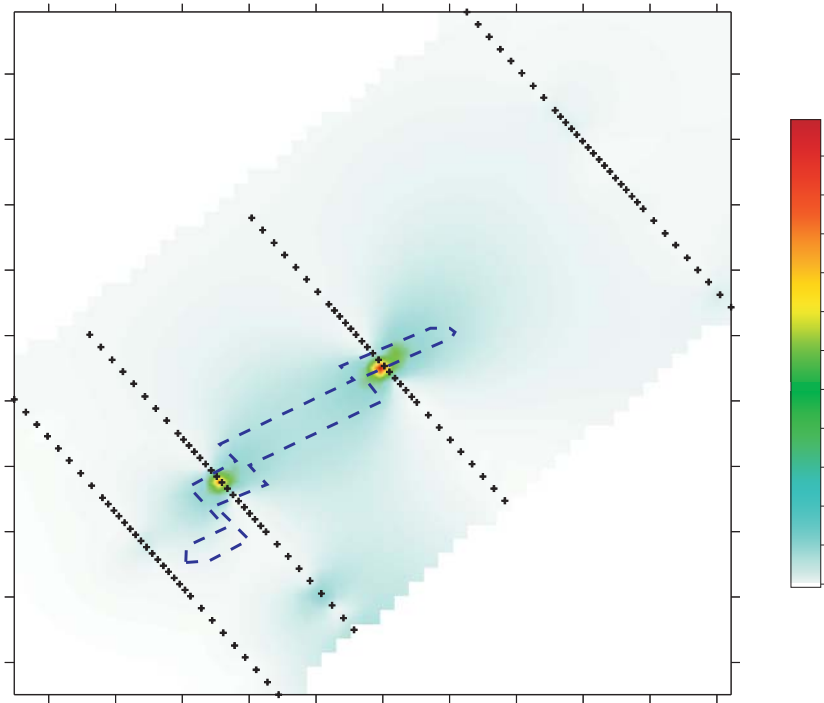
- Location: Northern Saskatchewan, Canada
- Climate: Subarctic with scattered permafrost
- Mineralization: Uraninite with minor chalcopyrite  
Athabasca sandstone host is in contact with basal metaquartzites-pelites
- Cover: 30 m of glaciofluvial sands and glacial till over approximately 520 m of cover rock, water table above deposit.
- Survey Design: ~ 30 m over mineralization  
~ 50 m into background



# Uranium - McArthur River (CAMECO)

This map indicates the intersection of the ore body with sample transects. It also shows direct SGH responses with the ore body location at trace values near the reporting limit of 1 ppt (part-per-trillion).

CAMECO conducted their own data analysis that indicated that the highest discriminant analysis scores for the SGH data was directly related to the buried Uranium ore. A conclusive SGH signature is present.



P2 Main Pod Area  
Hydrocarbon Study  
Discriminant Scores

